





Interpret pictograms (1–1)

1 The pictogram shows what some teachers had for school lunch.

Lunch	
Fish	
Chicken	
Spaghetti	
Salad	

Key
 = 1 lunch

a) Which lunch did the most teachers have?
Tick your answer.


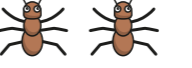
fish chicken spaghetti salad


b) Which lunch did the least teachers have?
Tick your answer.

fish chicken spaghetti salad

c) How many teachers had chicken?

2 The pictogram shows how many insects Class 2 saw on a bug hunt.

Insect	
Butterfly	
Bee	
Caterpillar	

Key
 = 1 insect

a) Complete the sentences.

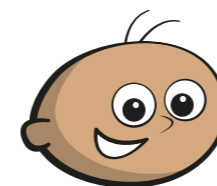
Class 2 saw butterflies.

Class 2 saw bees.

Class 2 saw caterpillars.

Altogether Class 2 saw insects.

b)

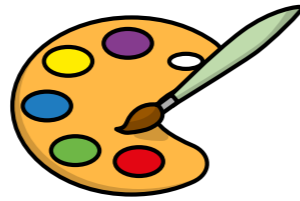


Last summer I saw a bee hive. I do not think I could draw a pictogram to show all the bees.

Do you agree with Tommy?

- 3 Class 1 were asked to choose their favourite colour out of yellow, green, blue and purple.

The pictogram shows the results.



Colour	
Yellow	
Green	
Blue	
Purple	

Key

= 1 child

a) How many children chose yellow?

b) How many children chose green?

c) How many more children chose purple than blue?

How did you work this out?

- 4 Eva's friends vote for their favourite fruit. She draws a pictogram and says it shows:

- the same votes for apple and pear
- melon got the fewest votes
- plum got the most votes
- grape got only 1 vote
- grape got fewer votes than pear.

a) Draw a possible pictogram so that Eva's statements are true.

Grape	Melon	Apple	Plum	Pear

b) Draw a key for the pictogram.

= 1 vote

