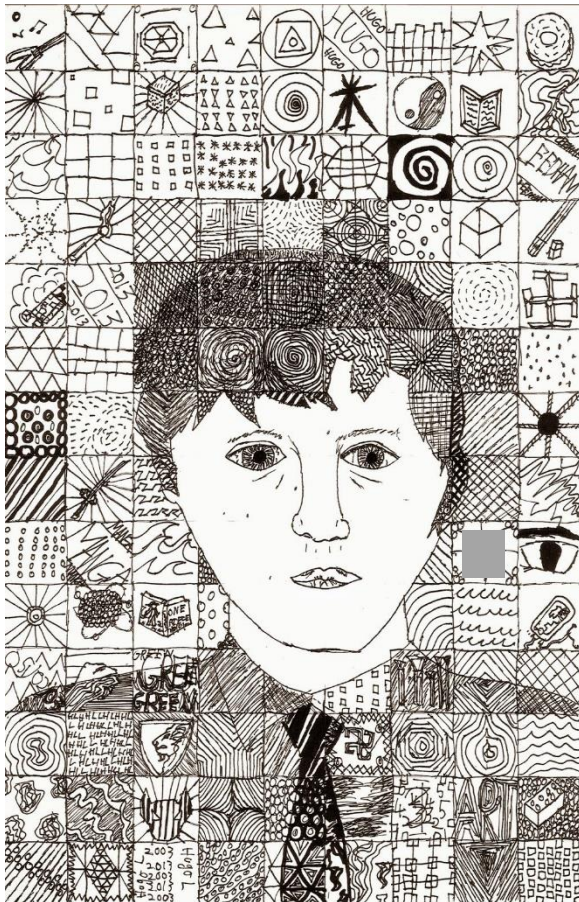


Friday 19<sup>th</sup> June

## KS2 Art

We have been looking at portraits and self-portraits this half term and you have been looking at how artists use different styles.

This week you are going to draw another portrait, it can be a portrait of someone else or a self-portrait, but this time I want you to concentrate on the background.



In these two portraits, the artists have drawn a grid of squares in the background and each square contains a different design. The faces are quite simple but the backgrounds are full of detail.

I would like you to draw a portrait in this style. You can use colour or just pencil. You can draw patterns in each square or pictures of things that might give clues about the person in the portrait.

It's up to you.

Have fun and I would love to see photographs of your finished portraits so send me a photo.

Miss Bamber