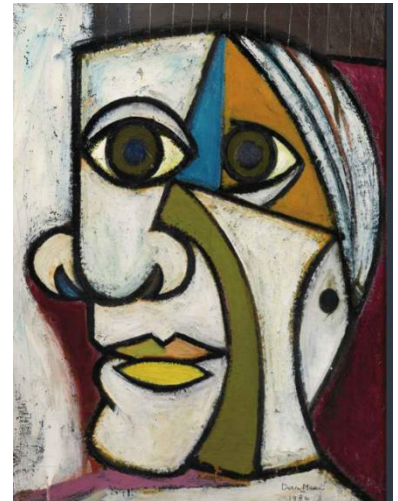


Friday 26th June

KS2 Art

This week I would like you to try to draw a portrait in an abstract style, like these portraits painted by Pablo Picasso.

Picasso was the first artist to paint in this style which is called cubism (from the root word 'cube'). In cubist paintings objects or features of a face are represented using geometric shapes like circles, triangles, rectangles, etc.



- Look at the shapes that he has used to represent parts of the faces.
- Look at the colours he has used.
- Look at the exaggerated features (eyes, noses, mouths).
- Look at how he has drawn the face with both the side view and front view in the same picture.
- Look at the backgrounds.
- Make your portrait as striking and colourful as you can.

If you need some help, I have copied a step by step example on the next page for you to follow.

Have fun and don't forget to send in photos of your creations.

Miss Bamber

