

Thursday.

Good morning year six.

Today please go to [white rose home learning](#)

[Y6](#)

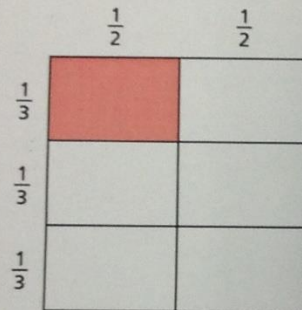
[Summer week 4 lesson 2](#) and watch the video

Next, complete the worksheets below:



## Multiply fractions by fractions

- 1 Dexter works out  $\frac{1}{2} \times \frac{1}{3}$  using a grid method.



Explain how this shows  $\frac{1}{2} \times \frac{1}{3} = \frac{1}{6}$

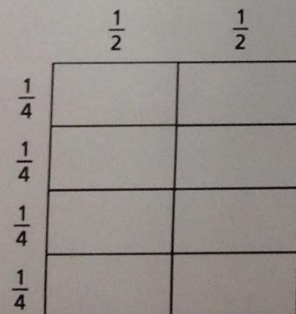
---



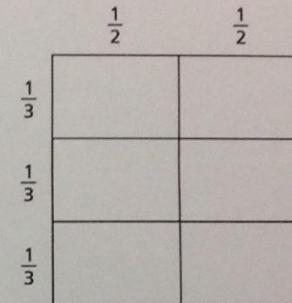
---

- 2 Shade the diagrams to show the fraction multiplications.  
Complete the multiplications.

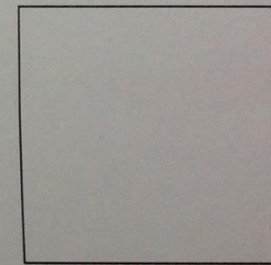
a)  $\frac{1}{2} \times \frac{1}{4} = \square$



b)  $\frac{1}{2} \times \frac{2}{3} = \square$



- 3 a) Divide the square to show that  $\frac{2}{3} \times \frac{3}{4}$  is equal to  $\frac{6}{12}$



- b) Mo says  $\frac{2}{3} \times \frac{3}{4}$  is equal to  $\frac{1}{2}$

Is Mo correct? \_\_\_\_\_

Explain your answer.

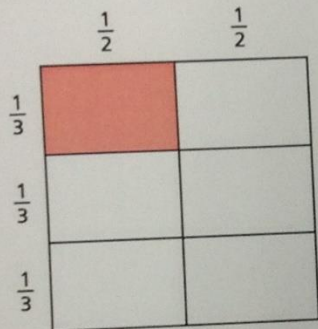
---



---

## Multiply fractions by fractions

- 1 Dexter works out  $\frac{1}{2} \times \frac{1}{3}$  using a grid method.

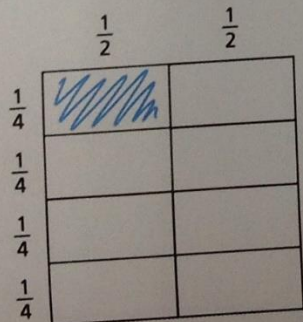


Explain how this shows  $\frac{1}{2} \times \frac{1}{3} = \frac{1}{6}$

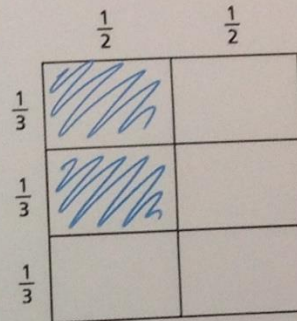
*Split into halves vertically and thirds horizontally.  $\frac{1}{6}$  of the whole shape is shaded.*

- 2 Shade the diagrams to show the fraction multiplications. Complete the multiplications.

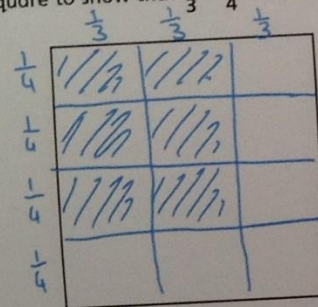
a)  $\frac{1}{2} \times \frac{1}{4} = \frac{1}{8}$



b)  $\frac{1}{2} \times \frac{2}{3} = \frac{2}{6} = \frac{1}{3}$



- 3 a) Divide the square to show that  $\frac{2}{3} \times \frac{3}{4}$  is equal to  $\frac{6}{12}$



- b) Mo says  $\frac{2}{3} \times \frac{3}{4}$  is equal to  $\frac{1}{2}$

Is Mo correct? Yes

Explain your answer.

$\frac{6}{12}$  is equivalent to  $\frac{1}{2}$