

Hello y6 you will continue with lesson 2 today. Watch the video again from yesterday if you need a refresher in multiplying fractions.

Next, complete the worksheet:

- 4 Complete the calculations.

a)  $\frac{1}{4} \times \frac{1}{5} = \square$

e)  $\frac{3}{4} \times \frac{1}{5} = \square$

b)  $\frac{1}{5} \times \frac{1}{6} = \square$

f)  $\frac{2}{5} \times \frac{5}{6} = \square$

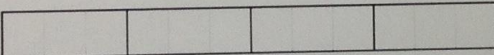
c)  $\square = \frac{1}{7} \times \frac{1}{8}$

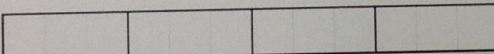
g)  $\frac{5}{7} \times \frac{5}{8} = \square$

d)  $\frac{1}{8} \times \frac{1}{9} \times \frac{1}{10} = \square$

h)  $\frac{3}{8} \times \frac{2}{9} \times \frac{3}{10} = \square$

- 5 Use the diagram to complete the calculations.

a)  $\frac{1}{3}$  of  $\frac{1}{4} = \square$  

b)  $\frac{2}{3}$  of  $\frac{3}{4} = \square$  

- c) What do you notice about your answers?  
Talk to your partner.

- 6 Fill in the missing numbers.

a)  $\frac{1}{10} = \frac{1}{2} \times \frac{1}{\square}$

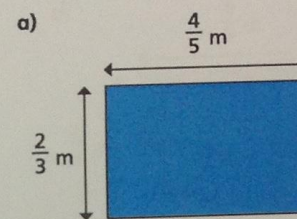
b)  $\frac{1}{5} \times \frac{\square}{3} = \frac{2}{15}$

- 7 Fill in the missing numbers.

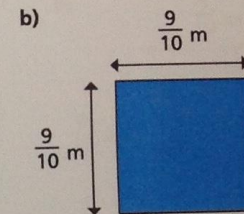
a)  $\frac{1}{10} = \frac{\square}{4} \times \frac{\square}{5}$

b)  $\frac{1}{4} = \frac{\square}{4} \times \frac{\square}{5}$

- 8 Calculate the area of the shapes.

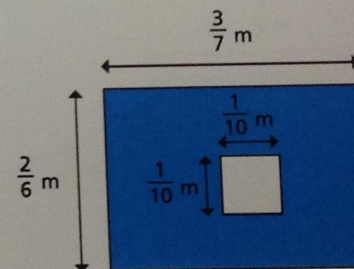


Area =  $\square$  m<sup>2</sup>



Area =  $\square$  m<sup>2</sup>

- 9 Work out the area of the shaded part.





4 Complete the calculations.

a)  $\frac{1}{4} \times \frac{1}{5} = \frac{1}{20}$

e)  $\frac{3}{4} \times \frac{1}{5} = \frac{3}{20}$

b)  $\frac{1}{5} \times \frac{1}{6} = \frac{1}{30}$

f)  $\frac{2}{5} \times \frac{5}{6} = \frac{1}{3}$

c)  $\frac{1}{56} = \frac{1}{7} \times \frac{1}{8}$

g)  $\frac{5}{7} \times \frac{5}{8} = \frac{25}{56}$

d)  $\frac{1}{8} \times \frac{1}{9} \times \frac{1}{10} = \frac{1}{720}$

h)  $\frac{3}{8} \times \frac{2}{9} \times \frac{3}{10} = \frac{1}{40}$

5 Use the diagram to complete the calculations.

a)  $\frac{1}{3}$  of  $\frac{1}{4} = \frac{1}{12}$

b)  $\frac{2}{3}$  of  $\frac{3}{4} = \frac{1}{2}$

c) What do you notice about your answers?  
Talk to your partner.

6 Fill in the missing numbers.

a)  $\frac{1}{10} = \frac{1}{2} \times \frac{1}{5}$

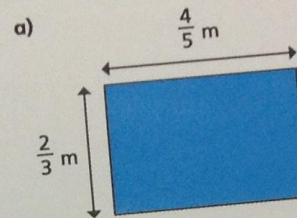
b)  $\frac{1}{5} \times \frac{2}{3} = \frac{2}{15}$

7 Fill in the missing numbers.

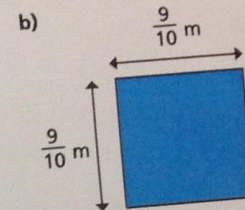
a)  $\frac{1}{10} = \frac{1}{4} \times \frac{2}{5}$

b)  $\frac{1}{4} = \frac{1}{4} \times \frac{5}{5}$

8 Calculate the area of the shapes.

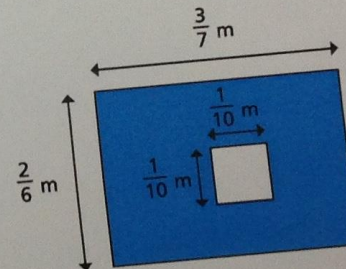


Area =  $\frac{8}{15} \text{ m}^2$



Area =  $\frac{81}{100} \text{ m}^2$

9 Work out the area of the shaded part.



$\frac{93}{700} \text{ m}^2$