

Monday y6

Hello we are continuing our fractions calculations and today we are dividing fractions by whole numbers:

Go to white rose maths summer week 4 lesson 3 to watch the video and then complete the worksheet:

Divide fractions by integers (2)

1

$$\frac{4}{5} \div 2 \quad \frac{4}{5} \div 3$$

a) Write two things that are the same about the calculations.

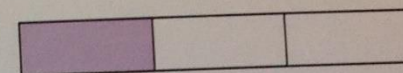
b) Write one thing that is different about the calculations.

c) Draw a diagram to help you work out the answer to $\frac{4}{5} \div 2$

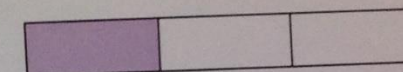
d) Draw a diagram to help you work out the answer to $\frac{4}{5} \div 3$

2 Complete the divisions using the diagrams to help you.

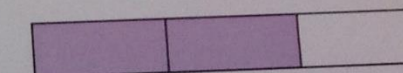
a) $\frac{1}{3} \div 2 =$



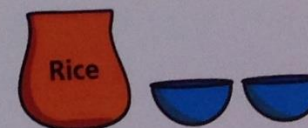
b) $\frac{1}{3} \div 3 =$



c) $\frac{2}{3} \div 3 =$



3 $\frac{3}{4}$ of a kilogram of rice is divided equally between two bowls.



How much rice is in each bowl?

4

Work out the divisions.

a) $\frac{1}{5} \div 7 =$

b) $= \frac{1}{6} \div 3$

c) $\frac{1}{4} \div 9 =$

f) $= \frac{5}{6} \div 12$

g) $\frac{8}{3} \div 7 =$

h) $= \frac{19}{20} \div 5$

Scroll down for answers:

Divide fractions by integers (2)

1

$$\frac{4}{5} \div 2 \quad \frac{4}{5} \div 3$$

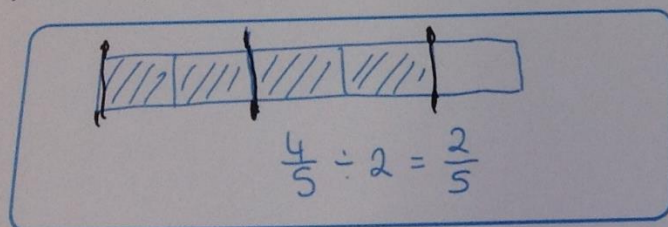
a) Write two things that are the same about the calculations.

e.g. They are both divisions.
They both contain $\frac{4}{5}$

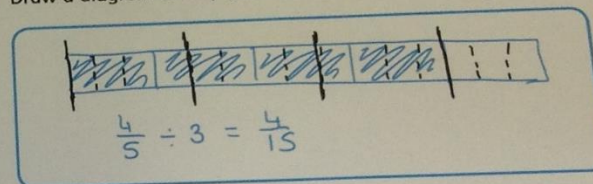
b) Write one thing that is different about the calculations.

What the fraction is being divided by

c) Draw a diagram to help you work out the answer to $\frac{4}{5} \div 2$

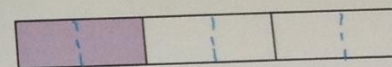


d) Draw a diagram to help you work out the answer to $\frac{4}{5} \div 3$

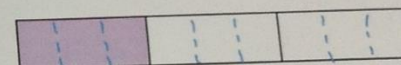


2 Complete the divisions using the diagrams to help you.

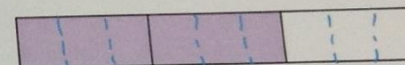
a) $\frac{1}{3} \div 2 = \frac{1}{6}$



b) $\frac{1}{3} \div 3 = \frac{1}{9}$



c) $\frac{2}{3} \div 3 = \frac{2}{9}$



3 $\frac{3}{4}$ of a kilogram of rice is divided equally between two bowls.



How much rice is in each bowl?

$$\frac{3}{8}$$

4

Work out the divisions.

$$\text{a) } \frac{1}{5} \div 7 = \boxed{\frac{1}{35}}$$

$$\text{b) } \boxed{\frac{1}{18}} = \frac{1}{6} \div 3$$

$$\text{c) } \frac{1}{4} \div 9 = \boxed{\frac{1}{36}}$$

$$\text{f) } \boxed{\frac{5}{72}} = \frac{5}{6} \div 12$$

$$\text{g) } \frac{8}{3} \div 7 = \boxed{\frac{8}{21}}$$

$$\text{h) } \boxed{\frac{19}{100}} = \frac{19}{20} \div 5$$